

Electronic

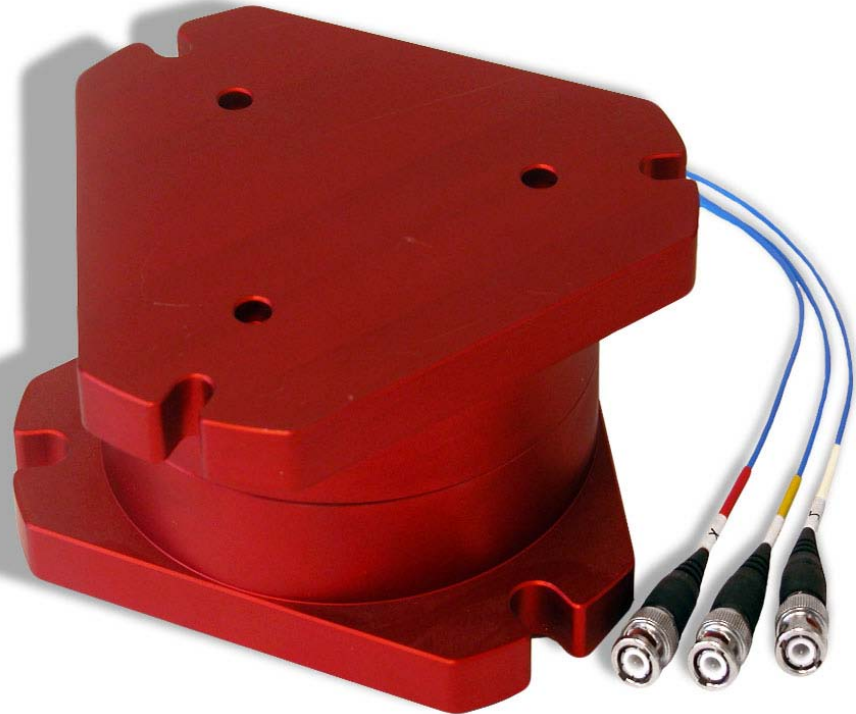
Load Cell Assembly

Model : 430_00_LCEL

Allows to calculate the pressure at the time of an impact. For load distribution testing. Complies with ANSI Z89.1 and EN 397.

Features :

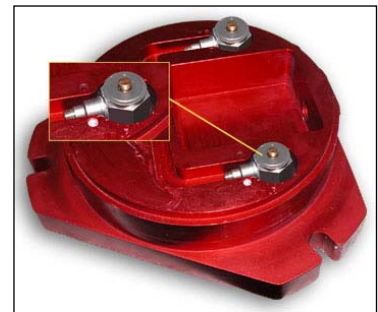
- Combination of three load cells (equally distanced) to avoid any lost of reading;
- Compatible with the Cadex software;
- Headform not included.



Shown installed on impact monorail with Impactor.



Mountaineer's Headform installed on Load Cell Assembly.



Inside view: Assembly of three load cells equally distanced for better accuracy.